

1 Arbutus Farm

DAVE AND BECKIE HEINLEIN
631 Cousins Road • 468.3744
Yarn, roving and sheepskins from biodynamic Romney sheep available at our farm store. They wear coats to protect soft, lustrous fleece which is sheared, washed and hand-dyed on the farm to enhance its lively warmth. Open most Fridays & Saturdays, 11-4, all year, or by appointment.

2 Buffum Brothers Farms

GARY AND M.R. BUFFUM
618 Channel Road • 468.2320
buffumbros@rockisland.com
We produce grains, straw, hay, cows and pigs. Please call for availability.

3 Carter Farm

RICHARD AND JEANNA CARTER
1731 Center Road • 468.3516
rjcarter@rockisland.com
We specialize in luxurious Romney sheepskins and grass-fed locker lamb. Our long-lasting and machine-washable sheepskins are generally in stock and available at the farm. Please call before visiting. Call or e-mail to order a half or whole lamb for your freezer.

4 Chickadee BioD

CHARLES AND CLARISSA MISH
203 Chickadee Lane • 468.3297
szabmish@aol.com
Fresh biodynamic fruit and vegetables in season. Available at Blossom Organic Grocery, local eateries and at our 10-acre homestead. Please call before visiting.

5 Crowfoot Farm

ERIC HALL AND ELF FAY
3759 Port Stanley Road • 468.4748
Certified organic strawberries and raspberries in season. We're open for U-Pick Tuesdays and Fridays 9 am-3 pm (or until sold out) from June through Labor Day. Berries can be ordered Monday - Saturday. Please call before visiting, except for U-Pick hours.

6 Double R Bar Ranch

REX AND DAWN RITCHIE
5430 Fisherman Bay Road • 468.2702
islandrancher@gmail.com
Our farm produces grass-fed Suffolk lambs available at Blossom Organic Grocery. We also raise grass-fed, dry-aged Murray Grey cattle available in quarter, half, and whole. Give us a call if you're looking for a healthier lifestyle by eating healthier food. Please call before visiting and for availability.

7 Heller Family Farm

STEVE AND MICHELE HELLER
445 Paradise Road • 468.3618
micheleheller@mac.com
Farm stand on Richardson Road with seasonal offering of greens, eggs, berries, herbs and flowers. Lavender available fresh, dried and in products such as hydrosols. Other fruits and vegetables possible. Look for signs describing produce available - self serve. Organic certification application in process. Call Steve or Michele at 468.3618 for more information.

8 Horse Drawn Farms

KEN AKOPIANTZ AND KATHYRN THOMAS
2823 Port Stanley Road • 468.3486
We sustainably raise vegetables, herbs, flowers, lamb, pork and beef on our animal-powered farm. Our products are available at the farm stand (self-serve, open day and night), the Lopez Farmers' Market, Blossom Organic Grocery and local restaurants. Call for product availability, farm tours or more information.

9 Island Fibers

DEBBIE HAYWARD & MAXINE BRONSTEIN
4208 Port Stanley Road • 468.2467
fibers@islandfibers.com
www.islandfibers.com
Specializing in Lopez-grown wool, we create one-of-a-kind yarns, garments and accessories that are hand-dyed,

hand-spun, and hand-knit or hand-woven. We also work in silk, alpaca, mohair, rayon, cashmere, cotton, hemp, bamboo, flax and blends. We teach classes and sell supplies and fine tools for spinners, knitters, and weavers. Commissions accepted. Available on-site at our studio, open by appointment.

10 J & M Lopez Occasional Fruit

JIM AND MARGARET BIRKEMEIER
29 Chickadee Lane
468.3775
We grow apples, Asian pears, blueberries, nectarines and peaches with occasional success. Please call before visiting or to check availability.

11 Jones Family Farms & Sweetwater Shellfish Farm

NICK AND SARA JONES
P.O. Box 804 • 468.0533
barlowbay@yahoo.com
www.jffarms.com
Premium, grass-fed beef, goat, pork, poultry & eggs. Local, wild salmon in season, frozen fillets & smoked salmon. Top quality Pacific, European Flat and Olympia oysters, clams & mussels. Available at local grocery stores, restaurants, farmers markets, and our farmstand (open daily). Also, farmland restoration services: farm plans, fencing, etc. Please call before visiting.

12 Lopez Harvest

CHRISTINE LANGLEY
875 Davis Bay Road • 468.2857
lopezgals@rockisland.com
Fresh, organic veggies, herbs and salad greens grown with a commitment to sustainable land stewardship and community health.

13 Lopez Island Farm

BRUCE DUNLOP
193 Cross Road • 468.4620
bruce@lopezislandfarm.com
Grass-fed lamb, pasture-raised pork, and a variety of gourmet specialty food products ranging from apple cider syrup and cooking sauces to garlic pesto. Available at the farm store (open daily), Lopez Village Market and Blossom Organic Grocery. No need to call before visiting.

14 Lopez Island Vineyards

BRENT CHARNLEY AND MAGGIE NILAN
724 Fisherman Bay Road • 468.3644
orders@lopezislandvineyards.com
www.lopezislandvineyards.com
We are a small, family-run winery and vineyard, producing premium, award-winning wines. Available at our tasting room, at most markets in the islands and by direct shipping. Tasting room hours are seasonal. Please telephone or check our website. We are open during the road construction.



15 Midnight's Farm

DAVID BILL
3042 Center Road • 468.3269
dbill@midnightsfarm.com
www.midnightsfarm.com
Lopez grass-fed beef raised without antibiotics or hormones available by the piece from our farm stand just north of the barn. Check our website or the sign below our mailbox for current availability. Information on our custom beef, green waste recycling and compost is at www.midnightsfarm.com.

16 Norfeld Farm

DANAH FELDMAN
166 Gloria Lane • 468.3642
www.romnormansculpture.com
Danah's 2 1/2-acre garden includes a zillion flowers, a large vegetable garden and a full greenhouse. She sells bedding plants in the spring and tender, luscious basil throughout the growing season. Ron Norman's metal sculpture studio is also on-site. Please call before visiting.

17 Northfield Farm

BENJAMIN KERCSMAR
P.O. Box 885 • 468.4679
Northfield.Sheep@gmail.com
I offer natural-colored and white wool, roving and yarn from registered Cotswold sheep. The yarn is hand-

washed and spun by a wind-powered mill in Maine. I also raise 100% grass-fed lamb available by the piece or as custom-cut half and whole lambs. Occasionally chicken and duck eggs and plant starts.

18 One Clay Hill Farm & Stonecrest Jam

DAVID AND SUSAN CORBIN
898 Davis Bay Road • 468.3068
corbin@rockisland.com
www.oneclayhillfarm.com
We offer heritage Navajo Churro sheep, USDA-inspected lamb, high luster long wool sheepskins in a variety of natural colors, raw wool for spinning and handspun yarn. Also, Stonecrest jams handmade on Lopez Island from seasonal fruits and berries. Available at the farm and at the Lopez Farmers' Market. Please call before visiting.

19 Redgate Farm

READ LANGENBACH & VALERIE YUKLUK
1 Redgate Lane, Fisherman Bay Road
468.2980 (farm) • 468.2101 (Valerie Yukluk)
erc@cablelang.com
Horse boarding; grass-fed lamb, whole or cut and wrapped; sheep breeding stock; llamas; and salmon (frozen or smoked). Lamb and smoked salmon available at the Lopez Farmers' Market and at the farm. Please call before visiting.

20 S&S Homestead Farm & Lopez Community Farm CSA

ELIZABETH SIMPSON, HENNING SEHMSDORF, JULIE BOTTJEN, AND BLAKE JOHNSON
2143 Lopez Sound Road • 468.3335 (S&S Homestead) • 468.3067 (CSA)
sshomestead@rockisland.com (farm), lopezcsa@yahoo.com (CSA)
Our small farm produces biodynamic seedlings, herbs, fruits, vegetables, flowers, eggs, livestock, custom meats and hay. For CSA subscriptions, call Blake and Julie at 468.3067 or e-mail to lopezcsa@yahoo.com. Farm tours by arrangement.

21 Skyriver Ranch Produce/Garden Starts

IRENE SKYRIVER
180 Snowberry Lane
468.2103
My produce and garden starts are organically grown. Plant starts are sold at Islandale from early to mid-spring. Produce is sold at Islandale from early July to mid-September. Produce is grown on land that has been farmed organically for forty years. Eggs (sold at end of driveway) are from free, happy hens, organically fed.

22 Sweet Grass Farm

SCOTT MEYERS AND BRIGIT WARING
866 Baker View Road • 468.4450
scott@rockisland.com
www.sgfbeef.com
We raise and sell grass-finished Wagyu "Kobe" beef. Please visit our website for details, www.sgfbeef.com. Haylage, straw and compost are also available. Visitors are welcome.

23 T & D Farms

TODD GOLDSMITH AND DIANE DEAR
1844 Baker View Road • 468.4775
toddandiane@tanddfarmslopezisland.com
Certified organic eggs, fruit, vegetables, and hay produced on land protected by a San Juan Preservation Trust easement. Available at local stores and restaurants. Please call before visiting or for information about on-farm sales and delivery.

24 Wardell Ranch

LOIS AND BOB WARDELL
4213 Port Stanley Road • 468.2772
wardell@rockisland.com
Hill Farm produces Jonagold and Elstar apples. Available at the farm stand late September into November and at Lopez Village Market.

Vegetables

Chickadee BioD
Heller Family Farm
Horse Drawn Farms
Lopez Harvest
Norfield Farm
One Clay Hill Farm
S&S Homestead Farm
Skyriver Ranch
T & D Farms



Herbs

Heller Family Farm
Norfeld Farm



Fruit and Berries

Chickadee BioD
Crowfoot Farm
Heller Family Farm
J&M Occasional Fruit
One Clay Hill Farm
S&S Homestead Farm
T & D Farms
Wardell Ranch



Poultry & Eggs

Heller Family Farm
Jones Family Farms
Northfield Farm
S&S Homestead Farm
Skyriver Ranch
T & D Farms



Lamb & Goat

Double Bar R Ranch
Carter Farm
Horse Drawn Farms
Jones Family Farms
Lopez Island Farm
Northfield Farm
One Clay Hill Farm
Redgate Farm
S&S Homestead Farm



Beef

Buffum Brothers Farm
Double Bar R Ranch
Horse Drawn Farms
Jones Family Farms
Midnight's Farm
S&S Homestead Farm
Sweet Grass Farm



Pork

Buffum Brothers Farm
Horse Drawn Farms
Jones Family Farms
Lopez Island Farm
S&S Homestead Farm



Seafood

Jones Family Farms
Redgate Farm



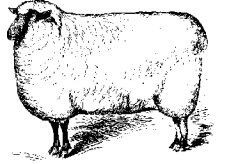
Wine and Food Products

Lopez Island Farms
Lopez Island Vineyards
One Clay Hill Farm



Natural Fiber Products

Arbutus Farm
Carter Farm
Island Fibers
Northfield Farm
One Clay Hill Farm



Plants and Flowers

Heller Family Farm
Horse Drawn Farms
Norfeld Farm
S&S Homestead Farm
Skyriver Ranch



Hay, Grain, and Straw

Buffum Brothers Farm
S&S Homestead Farm
T & D Farms



Livestock and Boarding Facilities

Buffum Brothers Farm
Northfield Farm
One Clay Hill Farm
Redgate Farm
S&S Homestead Farm



TO USE THIS GUIDE

Select products that interest you from the categories listed. Turn to the map and alphabetical farm listings. The specific farm entries will give you product availability and contact information.

LCLT SARD

(Sustainable Agriculture and Rural Development)

LCLT has initiated successful agriculture-related programs, including:

- The premier Mobile Processing Unit (MPU), the first such unit to receive a USDA Grant of Inspection. The MPU allows local farmers in a five county region to supply their community with healthy, wholesome, locally grown meats (see *Wall Street Journal* dated September 5th, 2008).
- This local Farm Products Guide.
- Lopez Fresh, a fresh food bank, now located with the Lopez Island Family Resource Center.
- LCLT co-founded the LIFE farm-to-school program with the Lopez School District.



SARD Intern Brady Lang

WHAT'S TO COME

LCLT is exploring the development of a farmer's equipment cooperative for grain growers. To learn more about LCLT SARD programs and our available internships, visit our web page at www.lopezclt.org.



The Lopez Island Chamber of Commerce shared printing costs for this Guide.

TIPS FOR VISITING FARMS

- We suggest calling ahead for directions, hours, and product availability.
- Please do not bring pets.

WHEN SHOPPING FOR LOCAL PRODUCTS

- Look for the **Islands Certified Local** program logo on island products at the farmers markets, grocery stores and food specialty shops. Participating food processors use a minimum of 75% island grown ingredients in their products.
- Visit the Lopez, Orcas, and San Juan Farmers' Markets, the San Juan County Fair, and the Lopez Holiday Bazaar for a wide selection of goods.
- For agricultural-related information contact WSU Extension, San Juan County at (360) 378.4414 or <http://sanjuan.wsu.edu>



LOPEZ COMMUNITY LAND TRUST

LCLT was established in 1989. For information about LCLT affordable housing and sustainable agriculture programs or to become an LCLT member, please call or write:

P.O. Box 25 • Lopez Island, WA 98261 • (360) 468.3723
LCLT@rockisland.com • www.lopezclt.org

2009-2010

Lopez Island Farm Products Guide



Diana Bower

Buying local farm products is a healthy way to nourish yourself, your family, and your community. Use this guide to find homegrown and homemade goods on Lopez Island, Washington.